

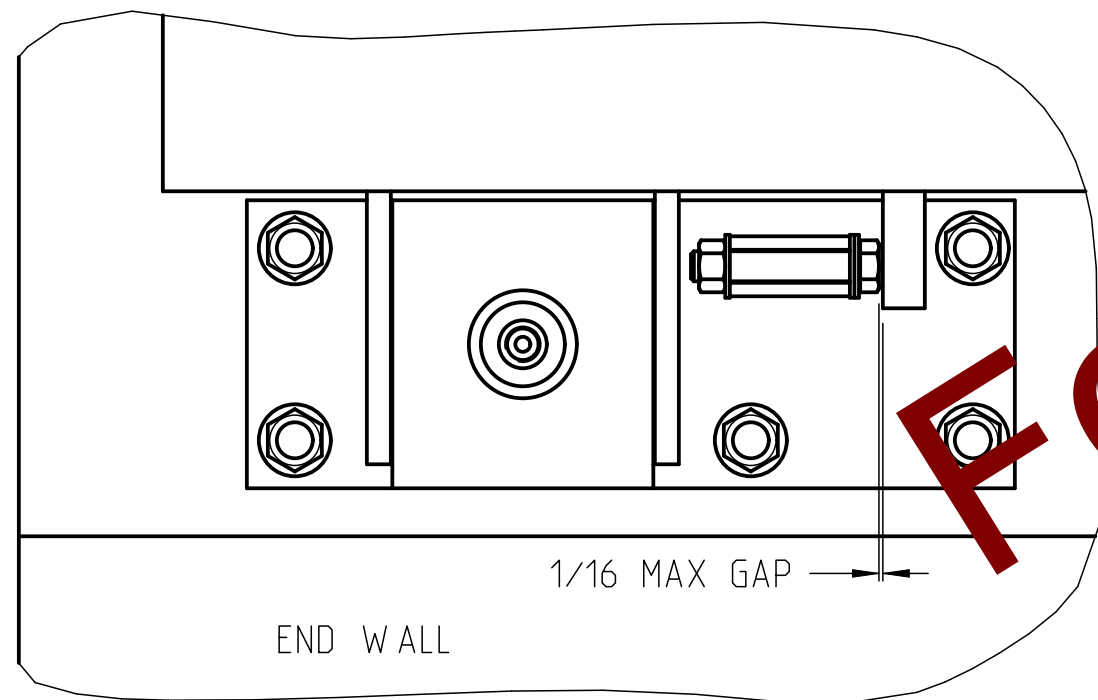
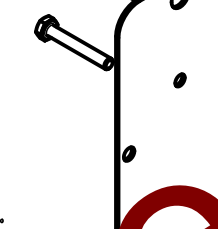
SECTION D-D  
BY METTLER TOLEDO: DRILL TWO #29 HOLES IN  
SUPPORT TUBE AND FASTEN DATA PLATE WITH 1/8"  
ALUMINUM AB4-4 POP RIVETS.

SIZE & CONFIGURATION					DIMENSIONAL CHART						
SCALE SIZE	FIRST	MIDDLE	MIDDLE	TERMINAL	MINIMUM FOUNDATION OPENING ("A")	DECK LENGTH "B"	TOTAL L/C "C"	"D"	"E"	"F"	"G"
★70'	17.5'	17.5'	17.5'	17.5'	70'-2"	70'-0"	69'-6"	17'-4 1/2"	17'-4 1/2"	17'-4 1/2"	17'-4 1/2"
75'	17.5'	20'	20'	17.5'	75'-2"	75'-0"	74'-6"	17'-4 1/2"	19'-10 1/2"	19'-10 1/2"	17'-4 1/2"
80'	20'	20'	20'	20'	80'-2"	80'-0"	79'-6"	19'-10 1/2"	19'-10 1/2"	19'-10 1/2"	19'-10 1/2"
86.5'	20'	23.3'	23.3'	20'	86'-9"	86'-7"	86'-1"	19'-10 1/2"	23'-2"	23'-2"	19'-10 1/2"
87.5'	23.3'	23.3'	17.5'	23.3'	87'-6 1/2"	87'-4 1/2"	86'-10 1/2"	23'-2"	23'-2"	17'-4 1/2"	23'-2"
90'	23.3'	23.3'	20'	23.3'	90'-0 1/2"	89'-10 1/2"	89'-4 1/2"	23'-2"	23'-2"	19'-10 1/2"	23'-2"
93'	23.3'	23.3'	23.3'	23.3'	93'-4"	93'-2"	92'-8"	23'-2"	23'-2"	23'-2"	23'-2"

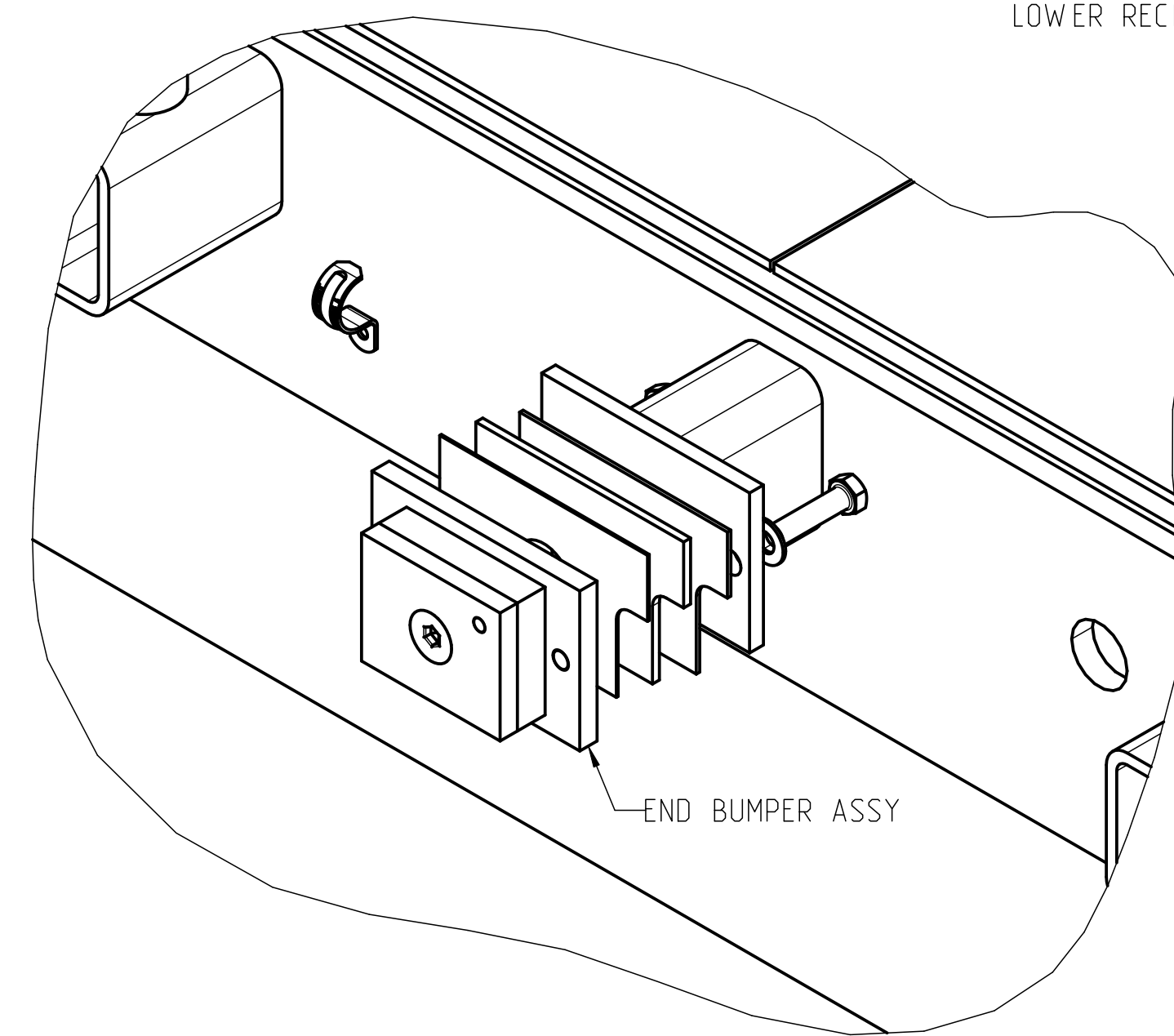
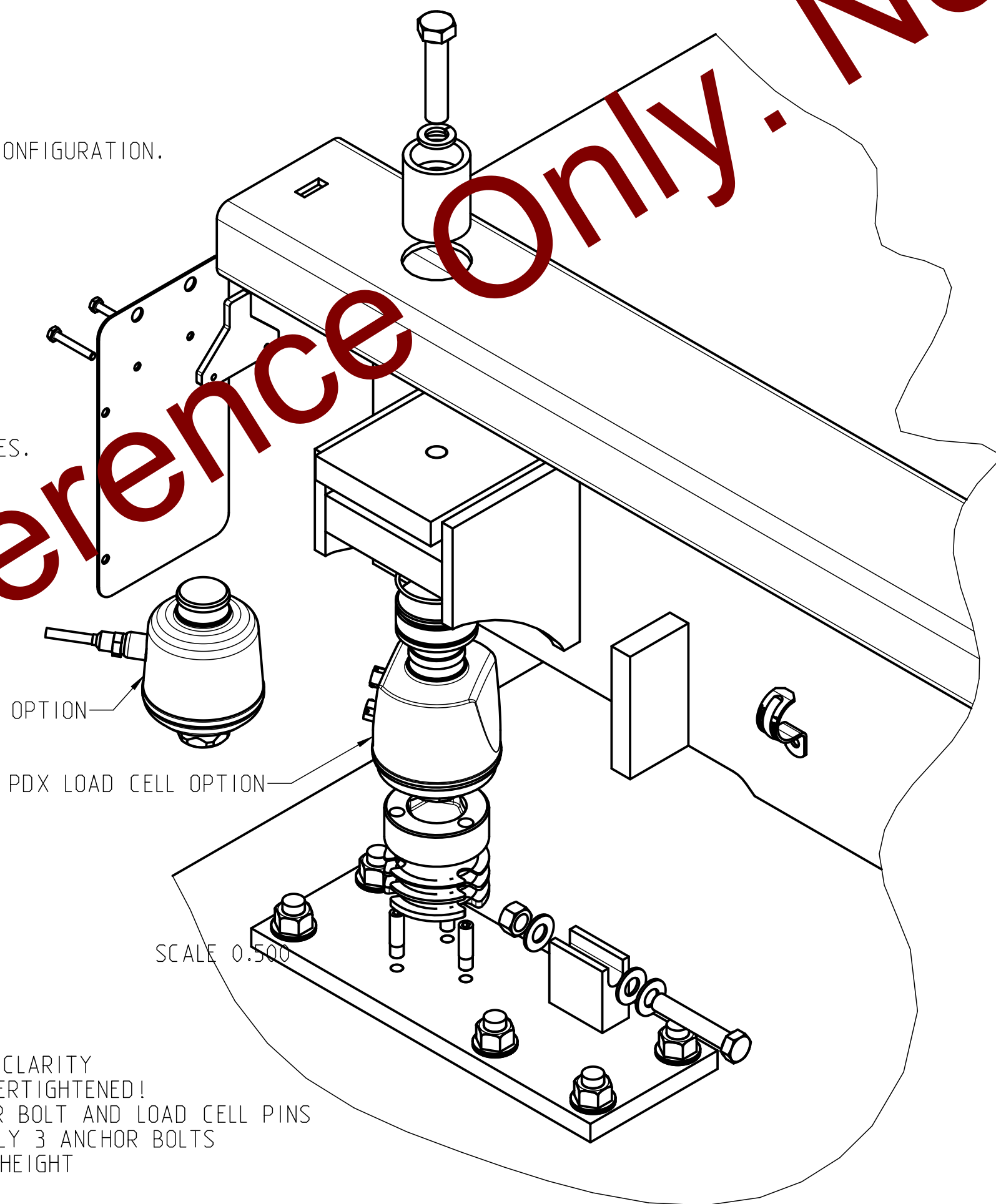
\* AVAILABLE AS 3-MOD

**NOTES:**

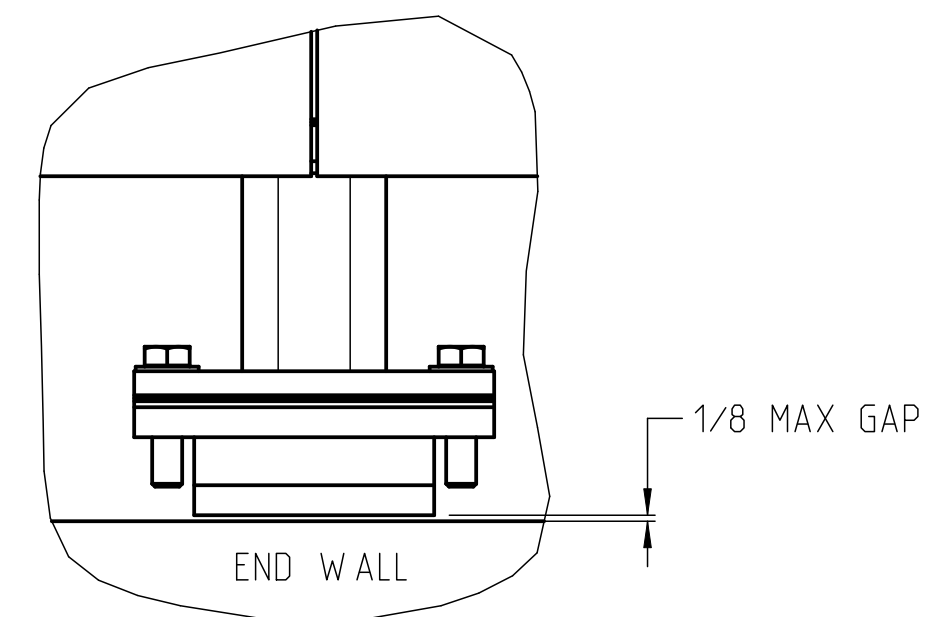
1. FOUNDATION LENGTH DIMENSION SHOWN IS NOMINAL. ACTUAL TOLERANCE IS  $-0 +1"$ .
2. MODULE LOCATION DESIGNATION IS USED TO DESIGNATE MODULE ASSEMBLY AND HARDWARE CONFIGURATION.
3. APPLY LOCTITE TO ALL GAP COVER BOLTS.
4. IF CABLE CONNECTORS BECOME CONTAMINATED REMOVE CONTAMINANTS WITH CONNECTOR CLEANER PROVIDED.
5. COUPLER LONGITUDINAL SHIMS MAY BE USED TO CORRECT MISALIGNMENT. A SINGLE  $1/8"$  SHIM SHOULD BE USED AT EACH COUPLER IN THE STANDARD CONFIGURATION.
6. COUPLER VERTICAL SHIMS MAY BE USED IF NECESSARY TO LEVEL MODULES.
7. REFERENCE THE INSTALLATION MANUAL FOR A COMPLETE LISTING OF INSTALLATION PROCEDURES.



DETAIL A





DETAIL C



IMPORTANT:  
THE INTERIOR SURFACE OF ALL LOAD CELL  
RECEIVERS (BOTH TOP AND BOTTOM) MUST BE  
GREASED WITH 68004326 DURING CELL  
INSTALLATION.

1. LOAD CELL BOOT REMOVED FOR CLARITY
2. SIDE COVER WILL BEND IF OVERTIGHTENED!
3. APPLY LOCTITE TO SIDE COVER BOLT AND LOAD CELL PINS
4. MID BASEPLATES WILL USE ONLY 3 ANCHOR BOLTS
5. 1/2" MAXIMUM RECEIVER SHIM HEIGHT

D	ADDED ANALOG TO LOADCELL OPTION	NLD				08/23/17	Finish: 8/finish	Tolerancing: ISO 8015	Size: ISO 14605 ☺
C	CORRECTED SPELLING ERRORS	NLD				07/25/17	All dimensions are finished dimensions post surface treatment	Surface according to: ISO 2768-2-K	
B	DWG WAS 208054, REMOVED TABLES, ADDED GDD	ADF				10/04/16	<b>METTLER TOLEDO</b> MTMS US-43229 Columbus OH	Drawn: ADF 05/20/10	Scale: 0.250
A	REMOVED DIELECTRIC LUBE NOTE	JSM				09/19/12	Refer to protection notice: ISO 16016 / Schutzvermerk ISO 16016 beachten Description: General Layout VTS231 4-Module	Change: NLD 08/23/17	Format: ANSI D 
REV	ZONE	DESCRIPTION	BY	APPROV	AGENCY	E.R. NO.	DATE	Note	Replaces
CHG								<b>61803020</b>	
		RECORD OF CHANGES						Model: 61803020 D.1 Rel.Level: Design Units: INCHES	D
								Drawing: 0.1 Rel.Level: Design	Sheet: 1/1